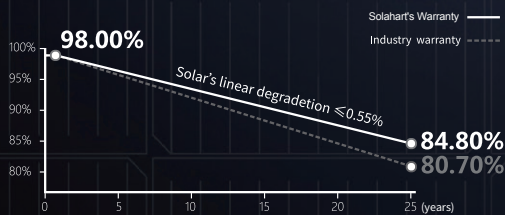
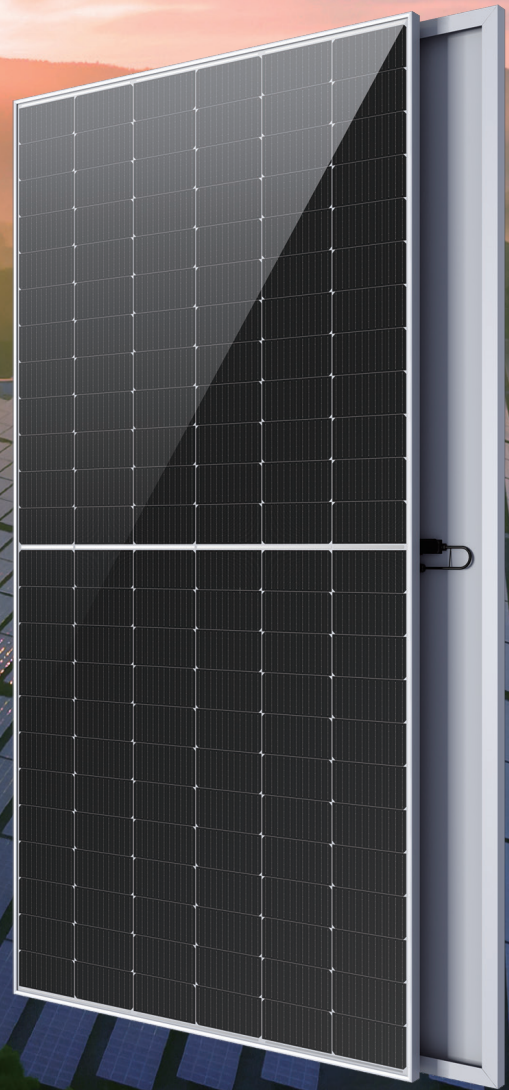


SUNCELL
COMMERCIAL SOLAR PANELS
SOLAHART540C2,
SOLAHART545C2,
SOLAHART550C2



15 Year Product Warranty
25 Year Performance Warranty



540~550W

POWER RANGE

0~+5WPOWER
TOLERANCE**21.3%**MAX MODULE
EFFICIENCY**≤ 2.0%**FIRST YEAR
POWER DEGRADATION**≤ 0.55%**YEAR 2-25
POWER DEGRADATION**SOLAHART540C2, SOLAHART545C2, SOLAHART550C2****Electrical Specifications****STC:** Irradiance 1000W/m², Cell Temperature 25° C, AM=1.5

Rated output (Pmpp / Wp)	540	545	550
Rated voltage (Vmpp / V)	41.76	41.93	42.10
Rated current (Impp / A)	12.93	13.00	13.06
Open circuit voltage (Voc / V)	49.70	49.90	50.10
Short circuit current (Isc / A)	13.72	13.81	13.90
Module efficiency	20.9%	21.1%	21.3%

NMOT: Irradiance 800W/m², Ambient Temperature 20° C, AM=1.5, Wind Speed 1m/s

Rated output (Pmpp / Wp)	403.5	407.3	411.0
Rated voltage (Vmpp / V)	38.92	39.08	39.24
Rated current (Impp / A)	10.37	10.42	10.48
Open circuit voltage (Voc / V)	46.97	47.16	47.34
Short circuit current (Isc / A)	11.13	11.20	11.27

Power Sorting: 0~+5W Measurement tolerance +/- 3%

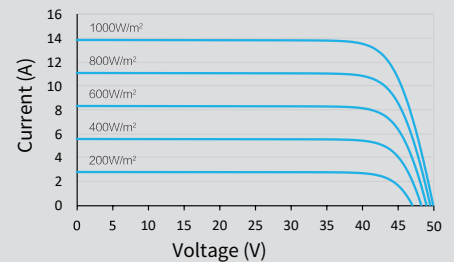
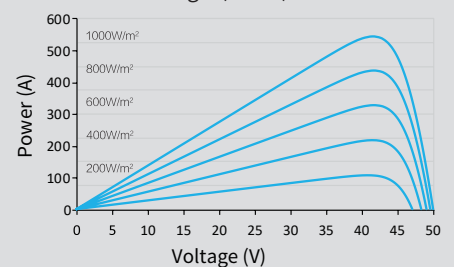
Temperature Ratings (STC)

Temperature coefficient (Pmpp)	-0.35%/°C	No. of diodes	3
Temperature coefficient (Isc)	+0.045%/°C	Junction box IP rating	IP 68
Temperature coefficient (Voc)	-0.27%/°C	Max. series fuse rating	25 A
Nominal module operating temperature (NMOT)	41 ± 2°C	Max. system voltage (IEC/UL)	1500V _{DC}

Operating Parameters**Mechanical Specifications**

Outer dimensions (L x W x H)	2278 x 1134 x 35 mm
Cell Type	P type Mono-crystalline
No. of cells	144 (6*24)
Frame technology	Aluminum, silver anodized
Front glass thickness	3.2 mm
Cable length (IEC/UL)	Portrait: 300 mm; Landscape: 1400 mm
Cable diameter (IEC/UL)	4 mm ² / 12 AWG
① Maximum mechanical test load	5400 Pa (front) / 2400 Pa (back)
Connector type (IEC/UL)	Stäubli MC4 connectors
Module weight	26.9 kg (Tolerance +/- 1.0kg)
Packing unit	31 pcs / box
Fire Rating	Class C
Country of Manufacture	China

① Maximum Mechanical Test Load=1.5×Maximum Mechanical Design Load.

Curve**Current-Voltage (545W)****Power-Voltage (545W)****Current-Voltage (545W)**